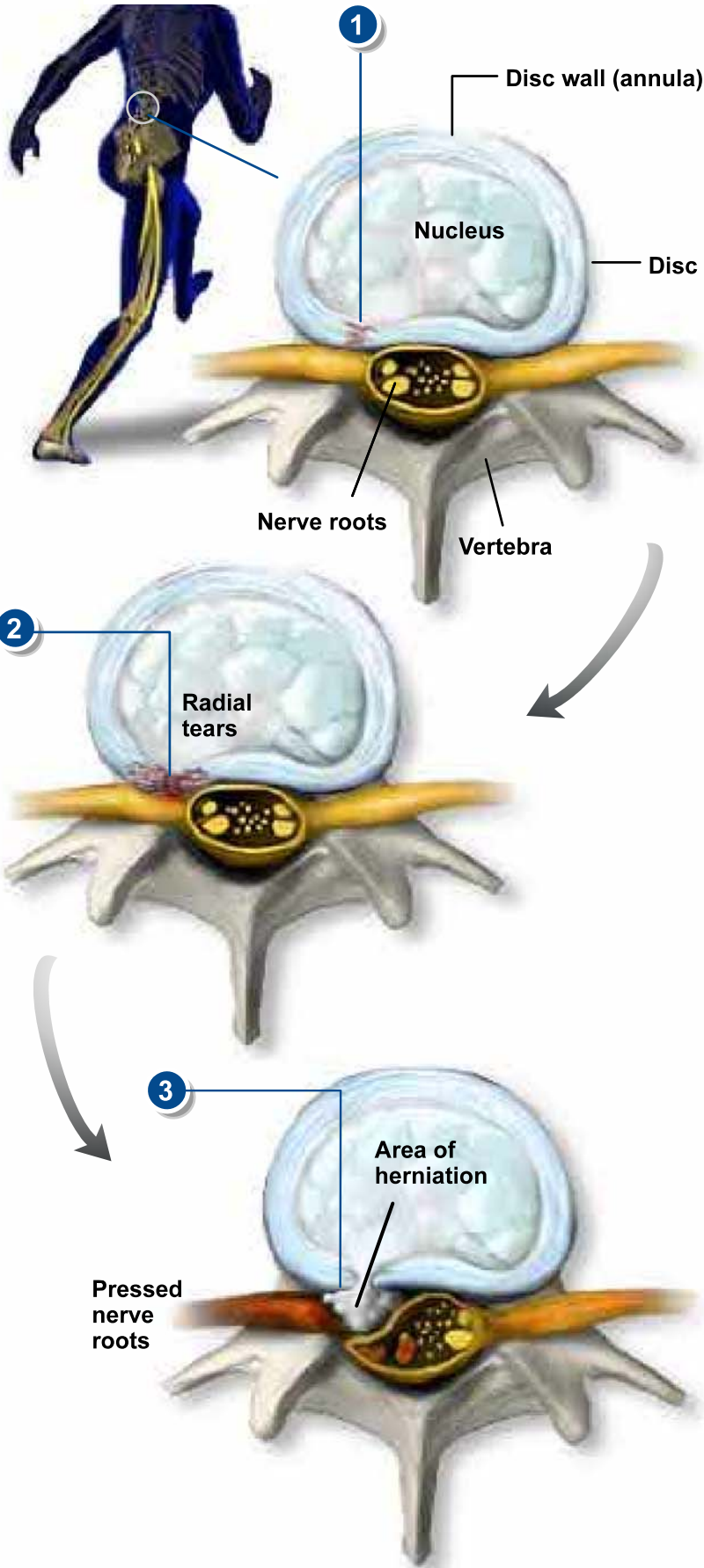


WHERE BACK PAIN BEGINS



Overview

Vertebral discs are the spinal column's shock absorbers. The discs cushion the vertebral bones and allow the spine to twist and bend. Vertebral discs are composed of two main parts, a soft inner nucleus (nucleus pulposus) and a tough, fibrous outer wall (annulus fibrosus).

1. Disc Wall Weakens

Vertebral discs can be damaged by the normal wear of aging or by traumatic injury. Problems often begin when fibers in the outer wall crack and weaken. Radial tears form in and around sensitive nerve fibers in the disc wall.

2. Nucleus Pushes Through Disc Wall

The disc's soft nucleus pushes through to the outer edge of the disc wall. This causes local back pain at the disc level.

3. Rupture Presses Against Nerve Roots

As the herniation pushes out of the disc wall, disc material may press against the large nerve roots. This can result in pain radiating down one or both legs.